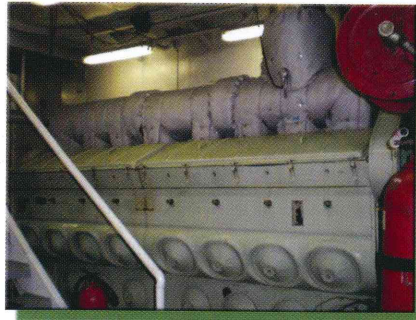


DME INCORPORATED

SANTA FE SPRINGS, CALIFORNIA

INSULATION BLANKETS



FREE INSTALLATION OFFER
(SEE BACK PAGE FOR DETAILS*)

**CUSTOM DESIGNED FLEXIBLE AND REMOVABLE
THERMAL AND SOUND INSULATION BLANKETS**

For over 35 years DME has earned a reputation for building quality products along with outstanding customer service.

DME is happy to announce the addition of standard and custom designed flexible and removable thermal insulation blankets and sound insulation blankets to our product line.



Uses: Exhaust manifolds, silencers, catalytic converters, scrubbers, SCR's, exhaust piping, turbo chargers, wye collectors, exhaust bellows, exhaust flex hose, flange connections and valves.

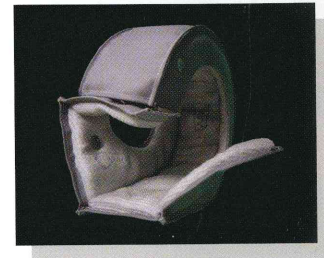
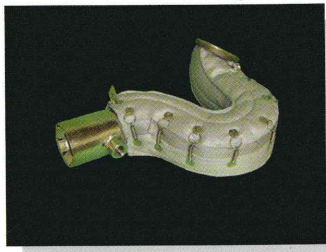
You will find our commitment to quality, attention to detail, and customer satisfaction is second to none. Our products can be designed and made from your AutoCad or Solid Work drawings as well as from photos and simple hand sketches.

We Offer a standard line of insulation Blankets that are rated for 1200°F, 1800°F, and 2200°F. In addition, we offer custom materials and designs too. Our products are asbestos-free and available with a variety of fasteners from lacing hooks to springs with rings and Velcro for easy removal.

Our Designs strive to achieve a proper fit that includes air tight seams and joints to insure a long service life. In addition to the standard silver gray silicon impregnated covers, we also offer bright silver for the custom look and black that hides the dirt and fingerprints.

Please Contact us with your thermal and/or sound insulation needs and we will happy to assist you.

Materials of construction for our **Standard Line** of Insulation Blankets:



1200° DESIGN

- The outer jacket is AMI-TUFF cloth Style No. SGL 3200
- The insulation is 1" thick ALPHA TEMP-MAT conforming with the requirements of MIL-I-16411 TYPE II and coast guard specification for combustible materials #164.009 and MIL-I-24244.
- The hot face is 0.008" LEWCO T-304 stainless steel knitted mesh.

1800° DESIGN

- The outer jacket is AMI-TUFF cloth Style No. SGL 3200
- The insulation is 1" thick treo fiberglass along with ALPHA SIL STYLE 1000 silica fabric.
- The hot face is 0.008" LEWCO T-304 stainless steel knitted mesh.

2200° DESIGN

- The outer jacket is AMI-TUFF cloth Style No. SGL 3200
- The insulation is 1" thick treo fiberglass along with 0.002" waffle textured stainless steel.
- The hot face is 0.008" LEWCO T-304 stainless steel knitted mesh.

****Custom designs available to meet your specific needs.****

To Order Call: 1-888-4-DME INC

Before



After



EASY TO INSTALL

Each section is carefully designed to overlap providing an air tight design. Field installation does not require special training. Our insulation jackets can be easily installed by technicians. Each order is furnished with an easy to understand installation detail.

PERSONNEL SAFETY

Protect employees and service technicians from burns. With the need for increased exhaust temperatures, DME insulation blankets are the answer in providing protection from burns.



EASY TO REMOVE

Springs with rings and Velcro make the removal of a section of insulation very easy. Standard clips for wire lacing are also available.



ORDERING IS AS EASY AS 1 - 2 - 3

- 1** Provide us with the hot face temperature and a description of the insulation requirements and we will recommend the proper materials for your application.
- 2** Send us your cad drawings, sketches or solid work drawings and we will provide you with a quotation with drawings when required.
- 3** Place the order and prepare to install or have DME install them (@ DME) at no charge on any product purchased from us prior to shipping*.

DME Incorporated

DISTRIBUTED BY:

OTHER DME PRODUCTS

- Expansion Joints
- Metal Bellows
- Exhaust Flex Assemblies
- Wye Assemblies
- Rain Caps
- Pump Connectors
- Flexible Metal Hose Assemblies
- Nut, Bolt and Gasket Kits
- Pipe Guides and Pipe Slides
- Roof/Wall Penetration Thimbles
- Custom Fabrication

*Upon request and when practical, DME will install our Insulation Blankets at our facility here in Santa Fe Springs, at no charge, on any products that are purchased from DME, when ordered at the same time.



DME INCORPORATED
14001 Marquardt Avenue
Santa Fe Springs, CA 90670
Toll Free: 1-888-4-DME INC
Tel: 562-921-0464
Fax: 562-802-7489
URL: www.dmeexpansionjoints.com
Email: info@dmeexpansionjoints.com